

**KanyaThek3D Version 3.00**

# Contents

- System Requirements ..... 3
- Installation ..... 3
- User Guide..... 6
  - Icon Directory ..... 6
  - Functions ..... 6
    - Creating a Parts List and Editing Extrusions & Parts ..... 6
    - Viewing the Parts List and Sending to your Distributor ..... 9
  - Setting up the Email Function ..... 10
- Index ..... 11



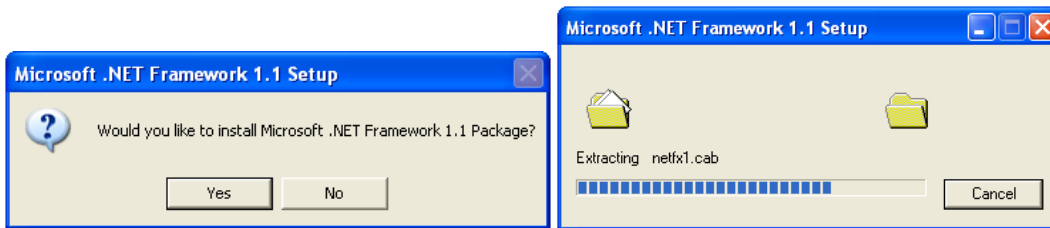
# KanyaThek3D Version 3.00

## System Requirements

- Windows 2000, Windows XP, Windows Vista;
- Microsoft .NET Framework 1.1;
- at least 256 MB RAM;
- at least 200 MB free hard disc
- at least 256 colors (1024 x 768 Pixel)

## Installation

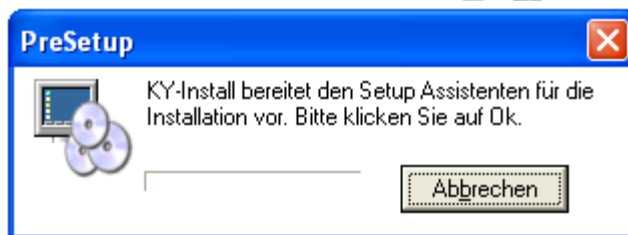
- Insert the CD ROM and wait for the disc to autorun or open the CD Drive folder
- Load the Application entitled '**dotnetfx\_engl**' first. This will ensure you have the Microsoft .Net Framework 1.1 installed, which is required to access all the functions of the KanyaThek package.
- Click 'Yes' to install... wait whilst files are extracted and installed...



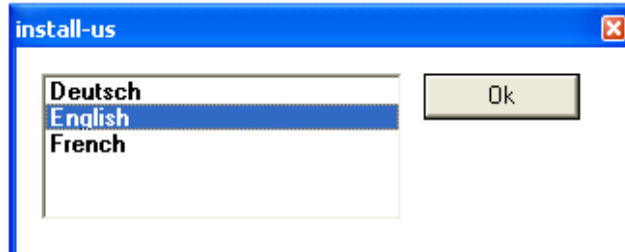
- Now load the Application entitled '**V3004**'. This will ensure the most up-to-date Service Pack is installed, allowing access to the most up-to-date product library.



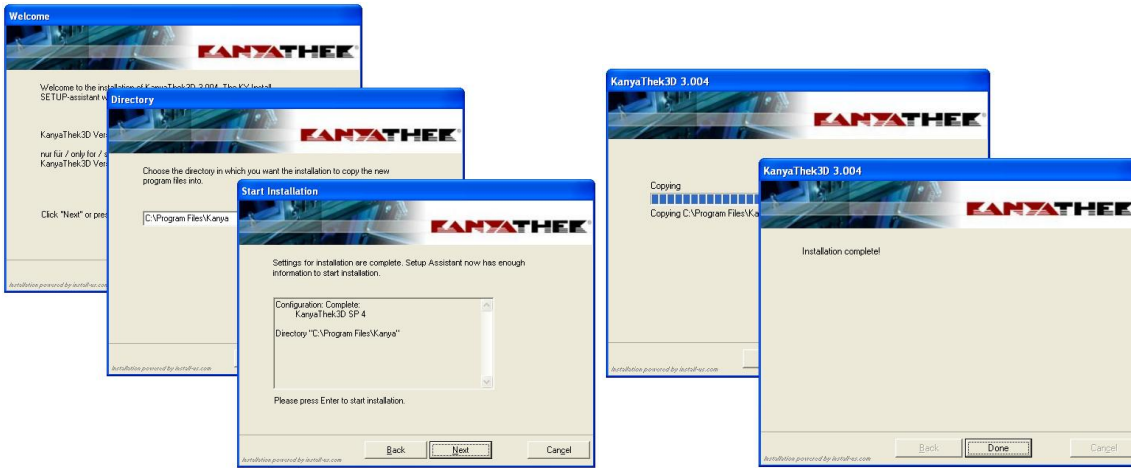
...Please wait...



...Select your language and click 'OK'...



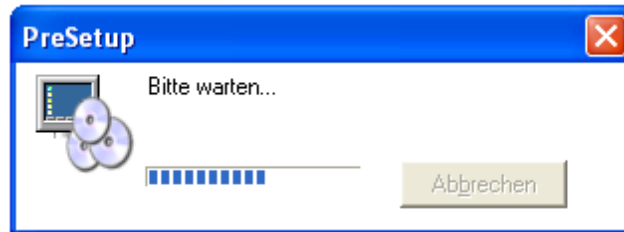
- Follow the on screen instructions, clicking 'Next' to continue to Installation...



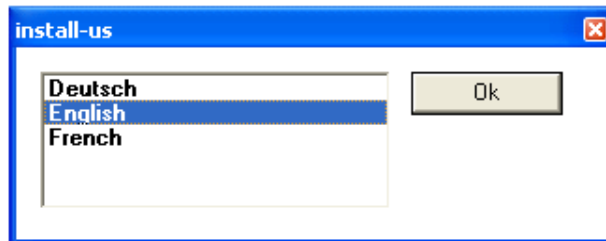
- Finally, load the Application entitled 'kt3004'. This is the KanyaThek3D software.



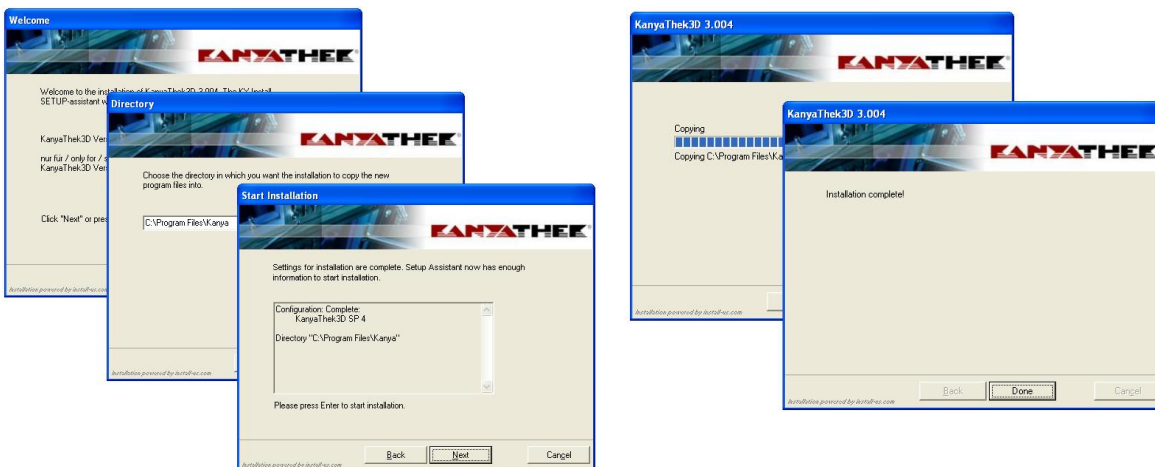
...Please wait...



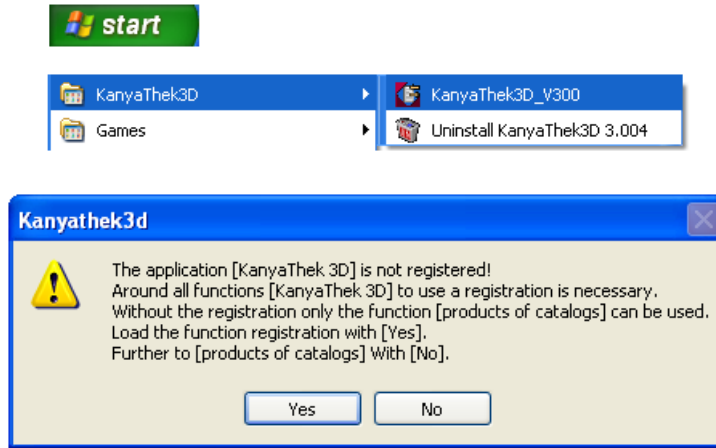
...Select your language and click 'OK'...



- Follow the on screen instructions, clicking 'Next' to continue to Installation...

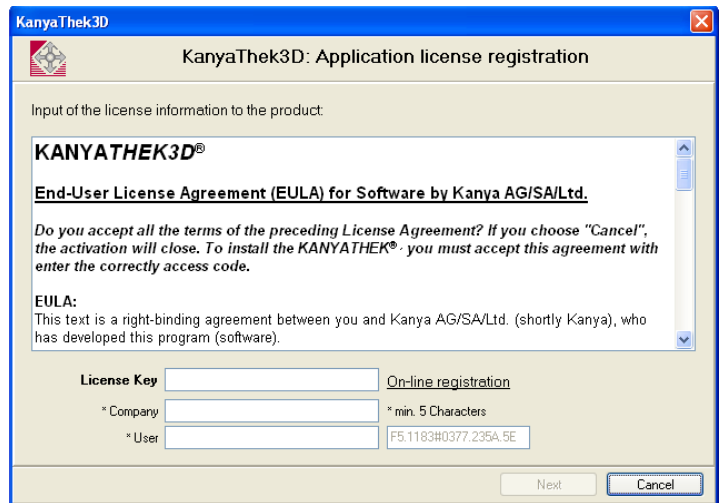


- Once complete, find the 'KanyaThek3D\_V300' icon in the Start Menu and open the program.



- A dialog box will appear to ask you to register your KanyaThek3D. Registration is necessary to use all functions of the software. Click 'Yes'.

- When the Registration Box appears, click the 'On-line registration' link.



**Software Licenses**

For the operation of your KanyaThek software you need a license key. Please fill out the following form, and we will send you a license by email immediately.

- Fill out all fields on the Software Licenses web page. The License Key will be sent to your email address usually within 1hour.






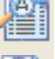






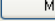
The form is divided into two sections: 'Company' and 'Contact Person'. The 'Company' section includes fields for Name of Company, Address, ZIP / City, and Country. The 'Contact Person' section includes fields for Name, First Name, Position, Telephone, and E-Mail. A 'submit' button is located at the bottom right of the form.

- When the license key arrives, open the KanyaThek again and follow the on screen instructions, filling out all necessary fields. When complete, the KanyaThek will open and the following window will be displayed...
- This will verify that you are running the most up-to-date version. By ticking the 'Don't display this screen again' button, this screen will be turned off and you will need to check with the website regularly that your version is up-to-date.




# User Guide

## Icon Directory


-  **Add Position** from the Kanya collection of products
-  **Product Catalogue** loads the catalogue of PVS and RVS sections including Accessories
-   **Product Info** this quick search will give you the spec on an item
-  **Edit Position** allows you to update the quantity and position
-  **Delete Position** will remove the selected item from the parts list
-  **Show Parts List** shows the list of added parts in a printable format
-  **Show Parts List With Price** if the price list feature has been installed
-  **Show Cutting List** allows you to see how each item will be cut and drilled
-  **CAD Import** allows you to import a parts list from your CAD program
-  **New Parts List** start a new project
-  **Open Parts List** previously created
-  **Refresh** the parts list to update changes
-  **Modify** project information and assembly requirements

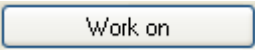
## Functions

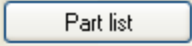
### Creating a Parts List and Editing Extrusions & Parts

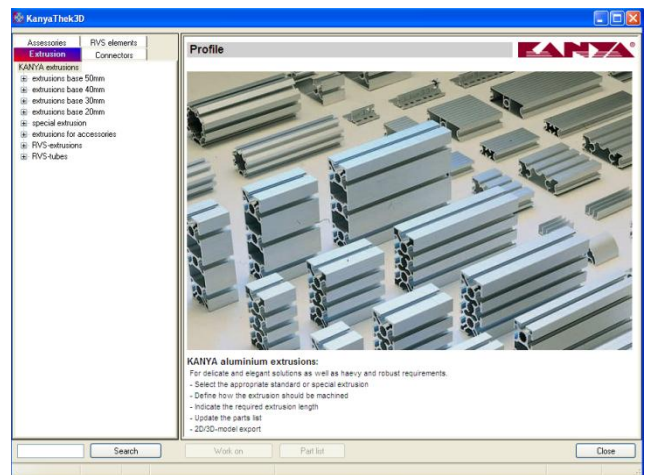
Click the 'Add Position' button  on the toolbar. The Product Catalogue will open, allowing you to choose the required part.

Use the tabs at the top to choose from 'extrusions', 'accessories', 'extras' or 'RVS elements'.

Single click on the  signs to expand the list of elements.


Choose your required part. This will show you the specifications of this part and allow you to  or add to





Alternatively, you can use the search box at the bottom of the screen to jump straight to the required part, if the part number is already know. The box will highlight yellow when the part number entered is valid.



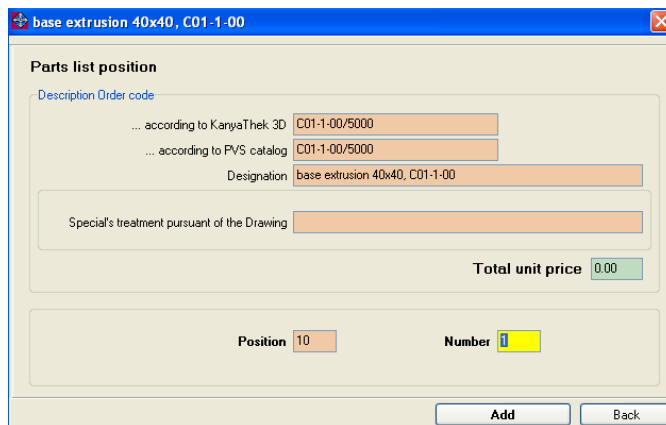
For quick lookup it is possible to use the  Product Catalogue button to bring up the above screen, without the option for editing and adding extrusions.

After selecting the required part, you can use the  button to add this part directly to the part list.

A window will appear (see opposite) and you are able to insert the quantity of parts required.

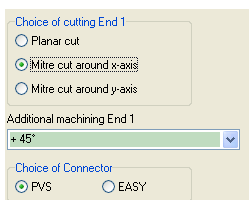
Click the 'Add' button, and these parts will now appear in the 'Part List' window on the main screen.

Parts list					
Item	Nr.	Order-Code	Description	Price	Total
▶	10	1	C01-1-00/5000	base extrusion 40x40, C01-1-00	0

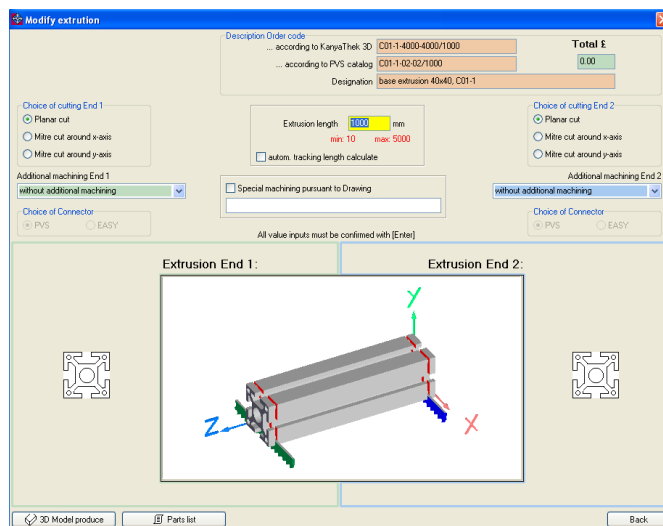


You are also able to Work on the selected part to define the cuts and drillings required before adding to the parts list. After clicking the 'Work on' button, the window opposite will appear.

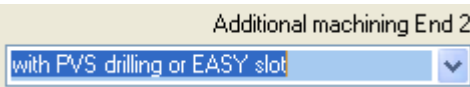
Firstly, enter the length required. Extrusion length 1000 mm min: 10 max: 5000




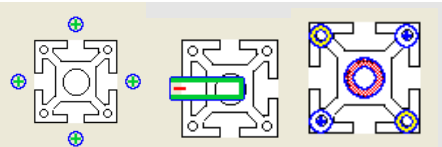
Then choose the type of cut on each end and the connector type is required. The left end is shown in the **Green** area. The right end is shown in the **blue** area.



After editing the required cuts, insert the required drilled holes for the connectors by using the 'Additional machining' drop down box.



Then click the  icon on the edge of the extrusion that requires a hole or thread.

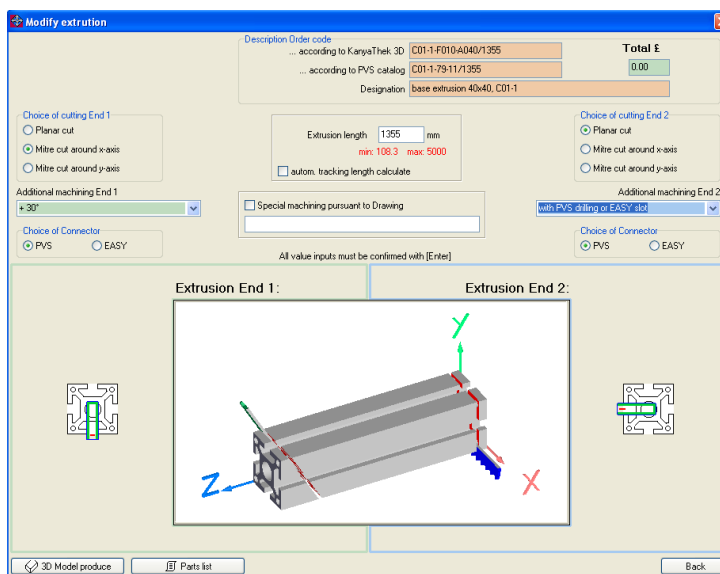


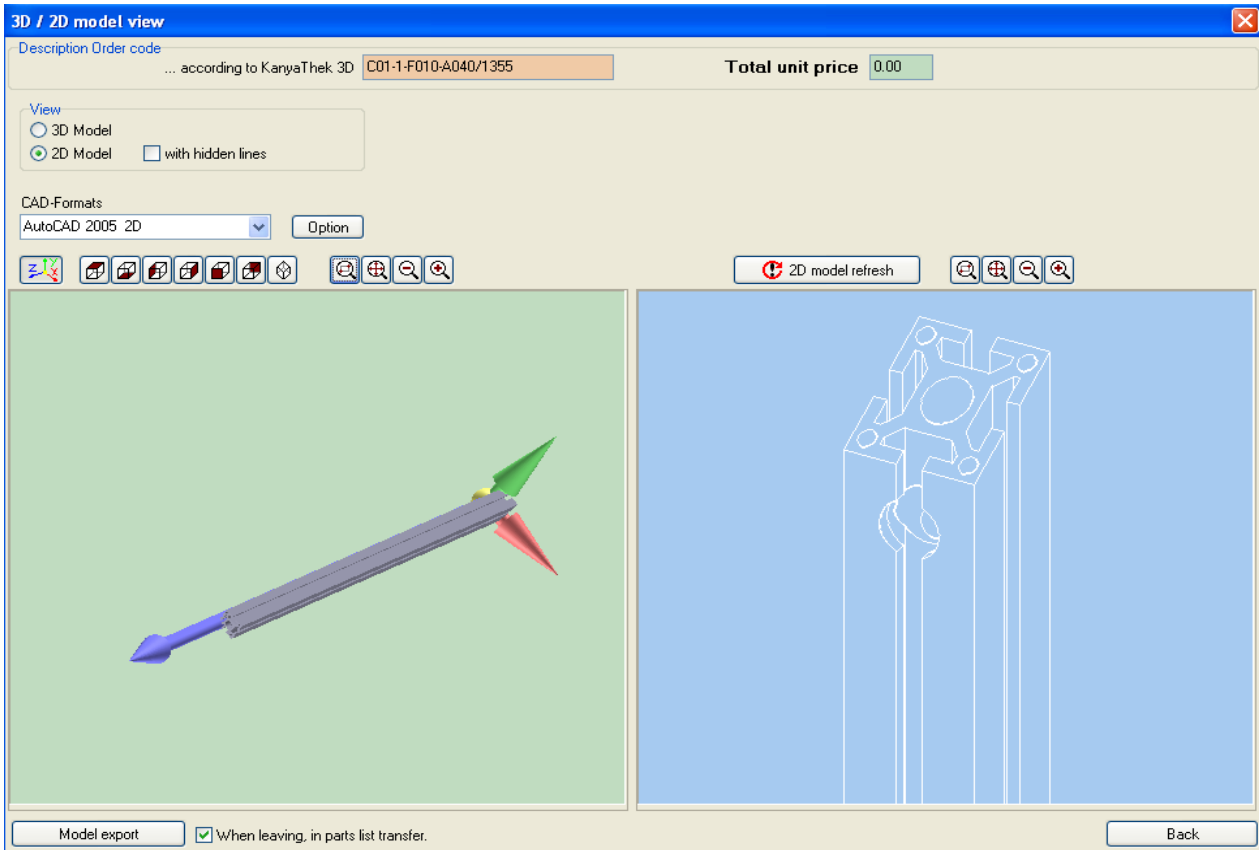
After editing each required cut or drilling, the central image and 'description order code' will be updated to reflect the changes.

You are also able to rotate the edited extrusion by clicking and dragging the extrusion in the picture.

Now click the Parts list button to transfer the edited part to the part list. The window will open where you can enter the required quantity of this section, and transfer it to the parts list on the main screen.


Alternatively, you can click the 3D Model produce button. This will open a new window, allowing you to view and rotate a scale version of the extrusion created, then export it to your own CAD software for further editing or creating a full drawing of the desired project.





Select 2D or 3D Model and choose your CAD software from the dropdown menu. When you have selected the correct software, click 'Model export'. This will confirm you wish to open your drawing software, and export the extrusion into it.

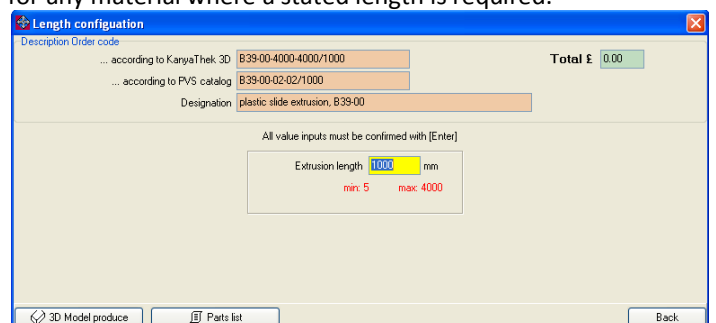
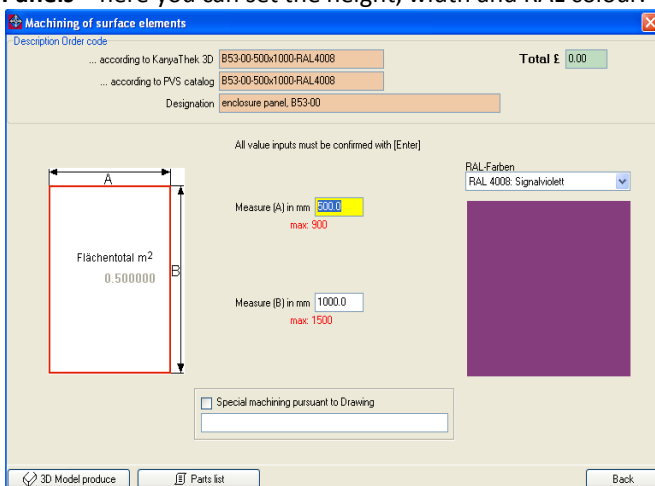
By checking the box entitled  'When leaving, in parts list transfer.', this will ask you if you wish to add the part to the main parts list (and quantity) before exiting.

Now ensure your parts list is saved by clicking the  button.

All other parts, other than extrusion can also be edited (where possible) and exported to your CAD software. The method of doing this is the same but with a few less options.


**Panels** – here you can set the height, width and RAL colour.


**Slide Extrusion, Cable Duct, Steel Rods** - Length Confirmation for any material where a stated length is required.

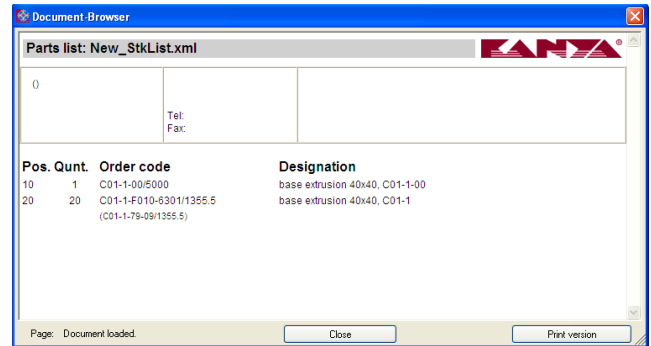


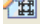
Again, 3D models can be produced from these and all elements that do not require editing (such as end caps and plates) by clicking the '3D Model produce' button.

## Viewing the Parts List and Sending to your Distributor

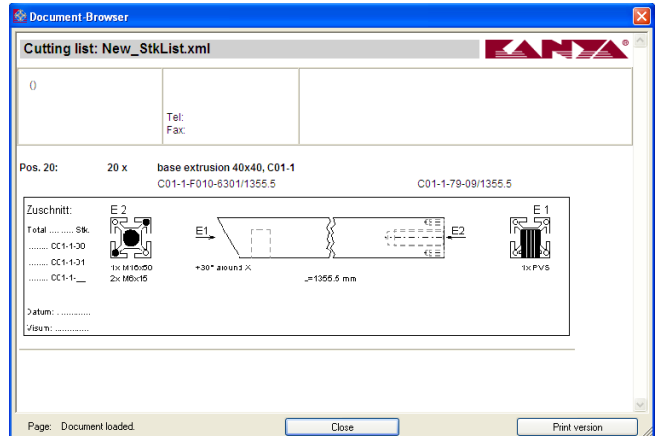
You can now view the parts list in a printable format by clicking the  button. This will open the following window, allowing you to see the full parts list including cutting and drilling codes, which can be printed or emailed to your distributor to place your order or request a quotation.

Or, if the price list has been installed, you can view the parts list including prices by clicking .



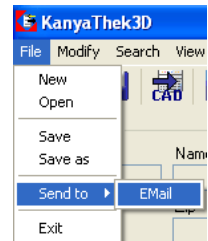
You can also view the cutting list by clicking on the  icon. This will bring up the window shown opposite which allows you to see how the extrusion is to be cut, drilled and thread.

Again, this can be printed or emailed to your distributor for easy ordering.



Your list can (if set up (see below)) be sent directly to your distributor by clicking on the 'File' menu and following 'Send to' and 'Email'. Ensure the list is saved prior to doing this.

The box below will open allowing you to enter a message (i.e. quotation request/ order) and automatically send to your distributor.



Send of email

From:

To:

Subject:

Attachment:

Message:

Login

Outgoing mail (Smtip) server:

Account name:

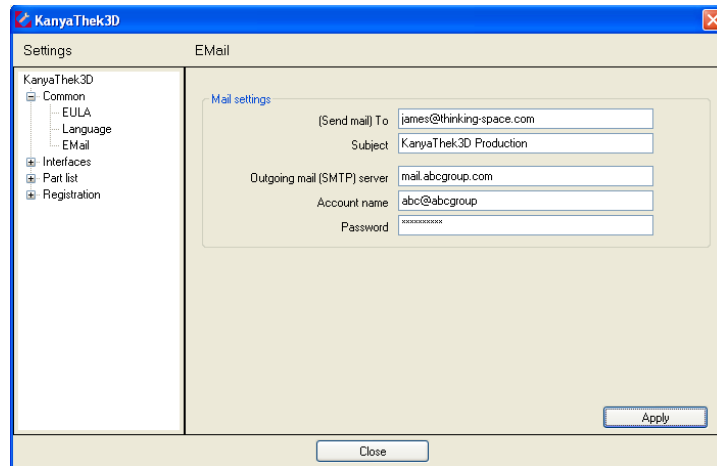
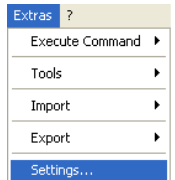
Password:

Log on using Secure Password Authentication (SPA)

## Setting up the Email Function

To set-up your KanyaThek to be able to send your parts list automatically to your distributor, click on 'Extras' followed by 'Settings'.

This will bring up the following window. Click the + sign on the 'Common' heading, followed by 'EMail'.



In the 'Send mail To' box enter your distributors email (james@thinking-space.com). Leave the 'Subject' line as 'KanyaThek 3D Production'. In 'Outgoing mail (SMTP) server' enter your sever. This information can be found in the account settings area of your email program. Enter your 'account name' and 'password' required to access the account and click 'Apply' followed by 'Close'.

This should now be set up. To test the system is set-up correctly, follow the instructions on Page 8 about emailing your Parts List, and enter a note in the subject saying 'Test', and you will receive an automated email back if it has been received. The email should also appear in your 'Sent Items' folder.

Please note that the list will only send if it has been saved first!

# Index

- 2D7
- 3D7
- 3D Model Produce .....7
- accessories.....6
- account name .....9
- Add Position** .....6
- Additional machining.....6
- Cable Duct**.....7
- CAD Import**.....6
- CAD software .....7
- Common.....9
- connector .....6
- Contents.....2
- Creating a Parts List and Editing Extrusions & Parts .....6
- cut .....6
- cutting and drilling codes.....8
- cutting list.....8
- Delete Position** .....6
- distributors email .....9
- dotnetfx\_engl**.....3
- drilled holes .....6
- Edit Position** .....6
- E-Mail .....9
- emailed.....8
- end caps .....7
- export to CAD software .....7
- extras.....6
- Extras.....9
- extrusions.....6
- full parts list .....8
- Functions .....6
- Icon Directory .....6
- Installation.....3
- KanyaThe3D\_V300 .....5
- kt3004** .....4
- language .....3, 4
- length .....6
- License Key .....5
- Model export' .....7
- Modify**.....6
- New Parts List**.....6
- On-line registration .....5
- Open Parts List** .....6
- Outgoing mail (SMTP) server .....9
- Panels**.....7
- Part List.....6
- parts list.....8
- password .....9
- plates.....7
- printable format.....8
- printed.....8
- Product Catalogue** .....6
- Product Info**.....6
- quantity .....6
- Refresh**.....6
- register .....5
- Registration .....5
- request a quotation.....8
- rotate .....7
- RVS elements.....6
- save .....7
- search.....6
- Send mail To .....9
- Setting up the Email Function.....9

Settings.....	9
<b>Show Cutting List</b> .....	6
<b>Show Parts List</b> .....	6
<b>Show Parts List With Price</b> .....	6
<b>Slide Extrusion</b> .....	7
Software Licenses.....	5
<b>Steel Rods</b> .....	7
System Requirements.....	3
Test .....	9
test the system .....	9
User Guide.....	6
<b>V3004</b> .....	3
view the cutting list.....	8
view the parts list.....	8
view the parts list including prices by clicking.....	8
Viewing the Parts List and Sending to your Distributor .....	8
Work On .....	6